

TM7 WiFi and GSM external antenna mod



Written by

[CT1EIZ](#)

Posted in

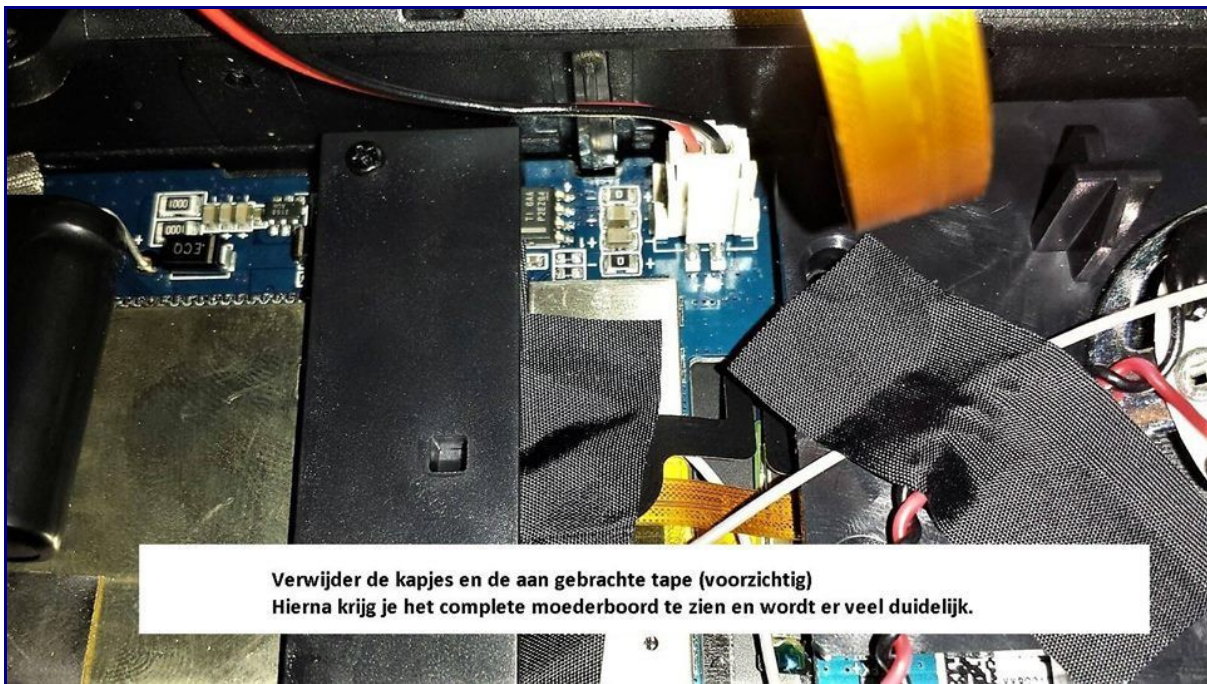
[Amateur Radio](#)

Comments

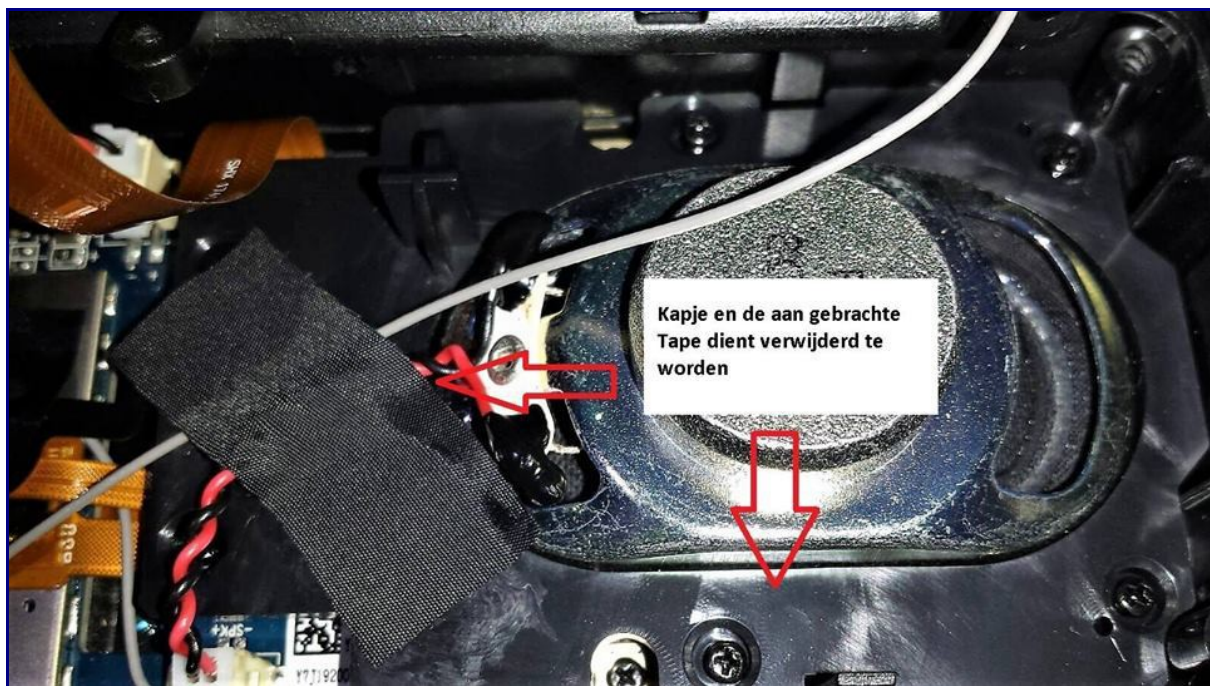
[2 Comments](#)

For the ones with wifi problems on the TM7; this is a photo manual that a good friend of mine made. I will try to translate the text on the pics as good as possible. The reason for the bad signal is simple: inside the antenna is simply not connected.

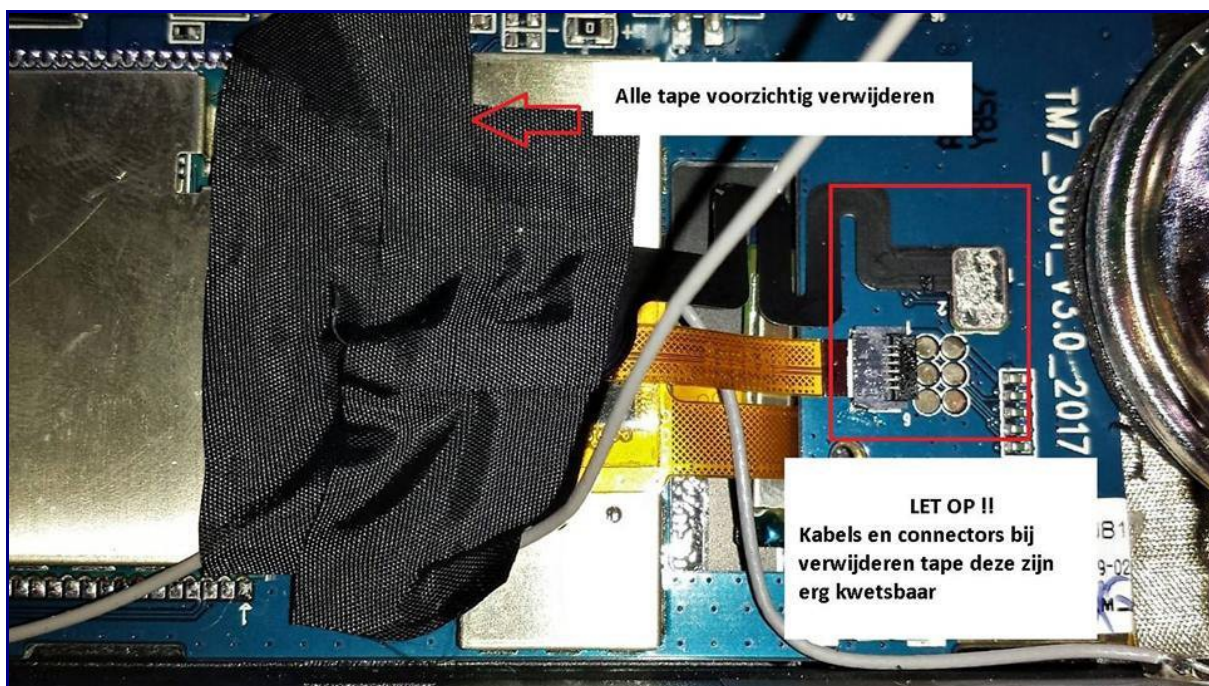
1 – Remove the tape and plastics. Afterwards you will see the whole motherboard.



2 – Plastic and tape that needs to be removed



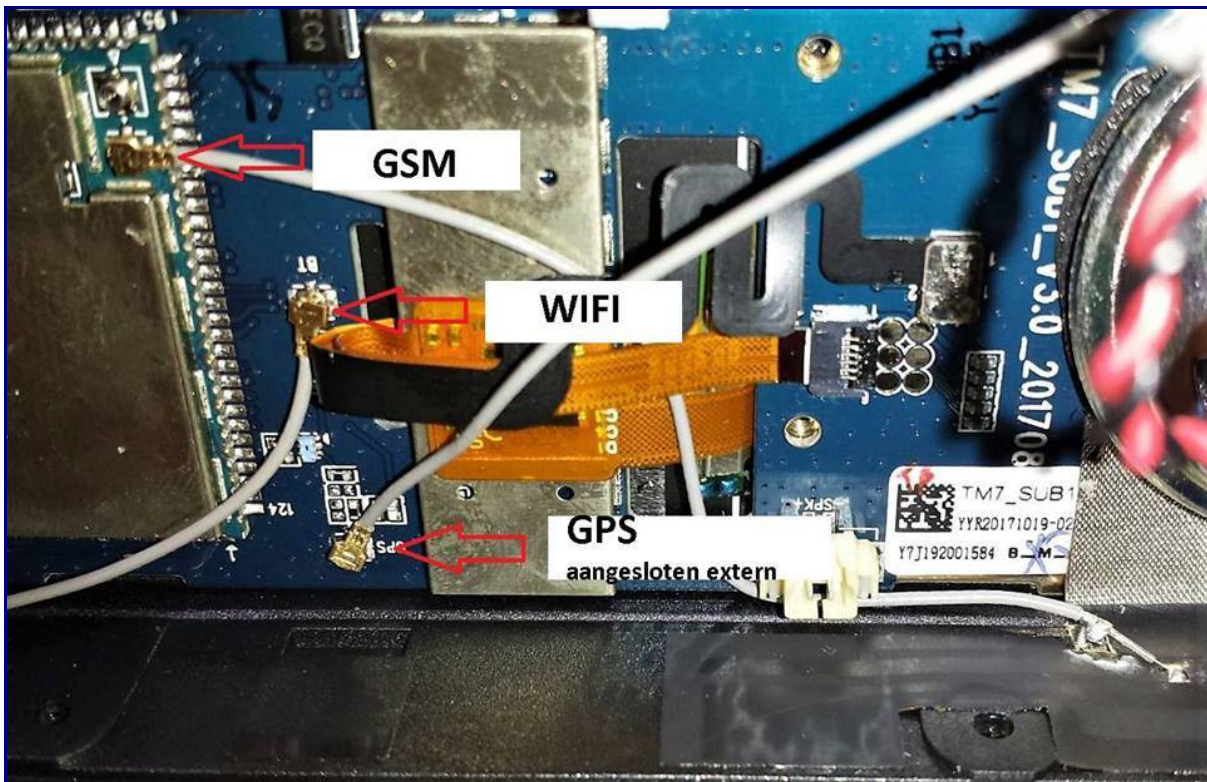
3 – Be careful when removing the tape. The connector can be damaged easily.



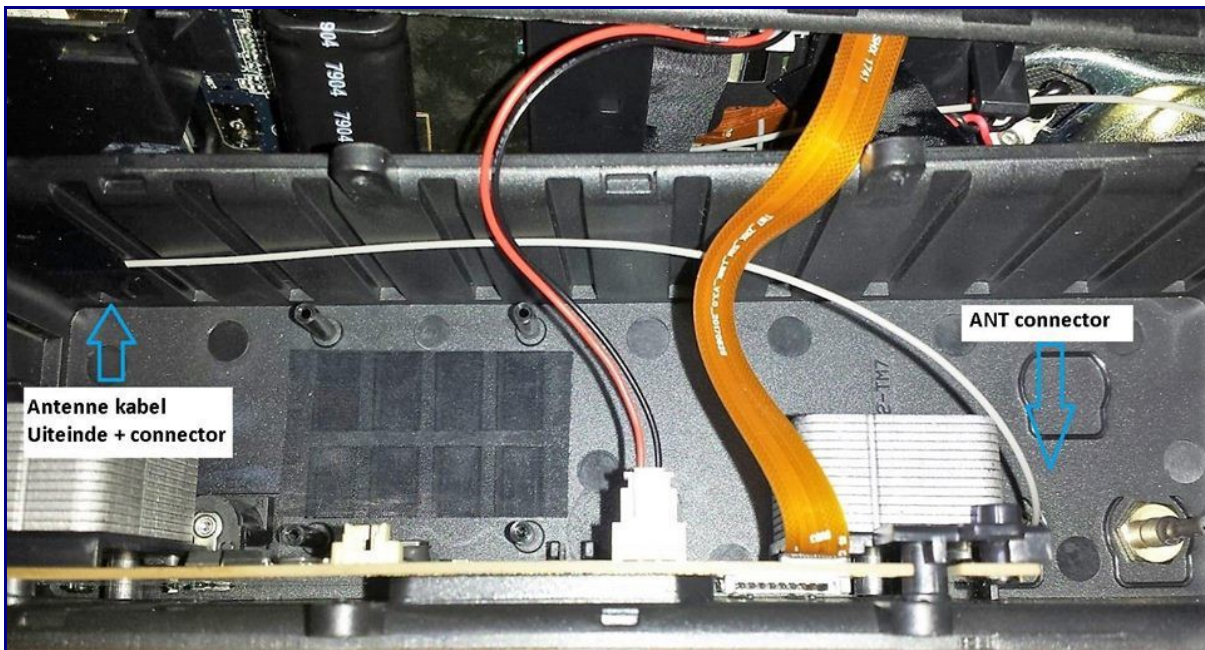
4 – Motherboard ready to tweak.



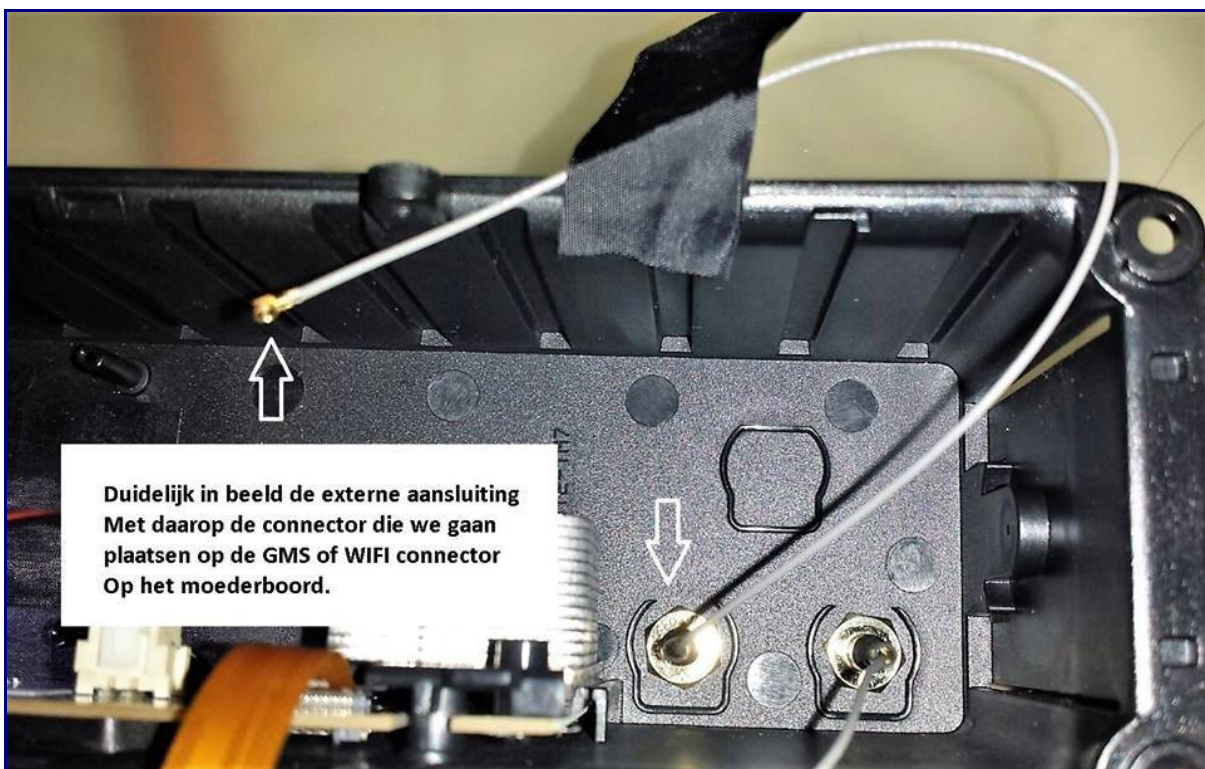
5 – GSM, Wifi and GPS (connected to external)



6 – End of antenna and connector.



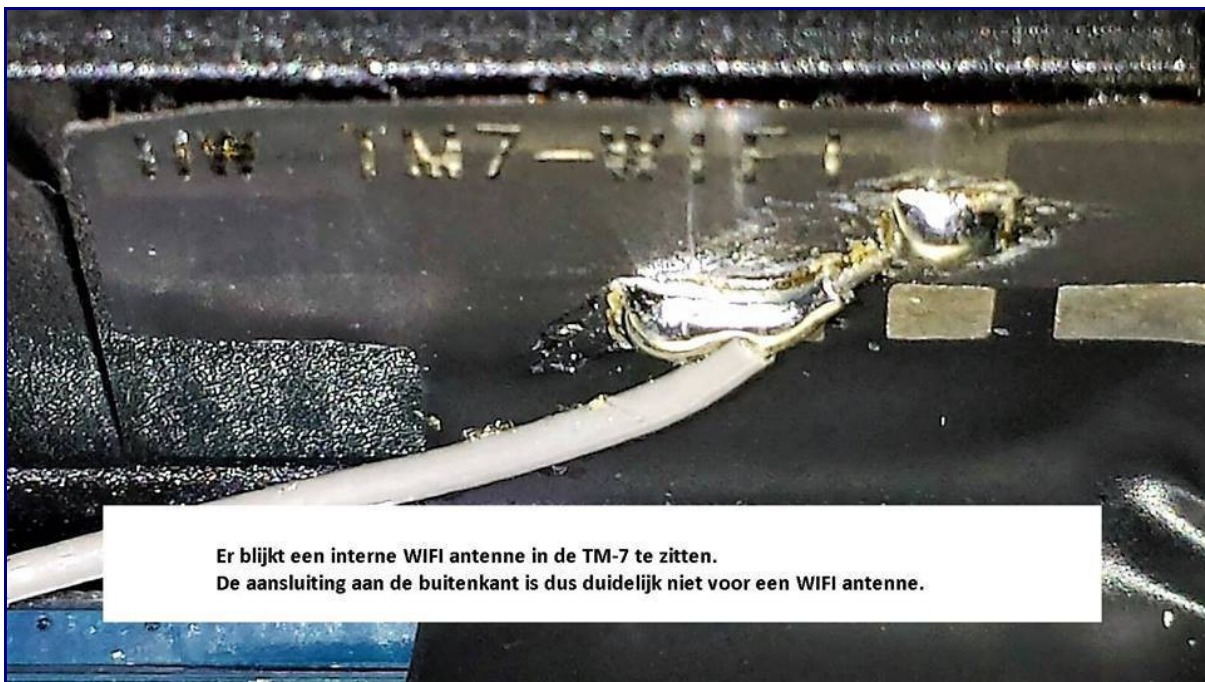
7 – You can clearly see the connector that we will connect to the GSM or wifi connector on the board.



8 – The TM7 does seem to have an internal GSM antenna. The connection on the outside is not connected to GSM.



9 – The TM7 does seem to have an internal wifi antenna. De connector on the outside is clearly not meant for wifi.



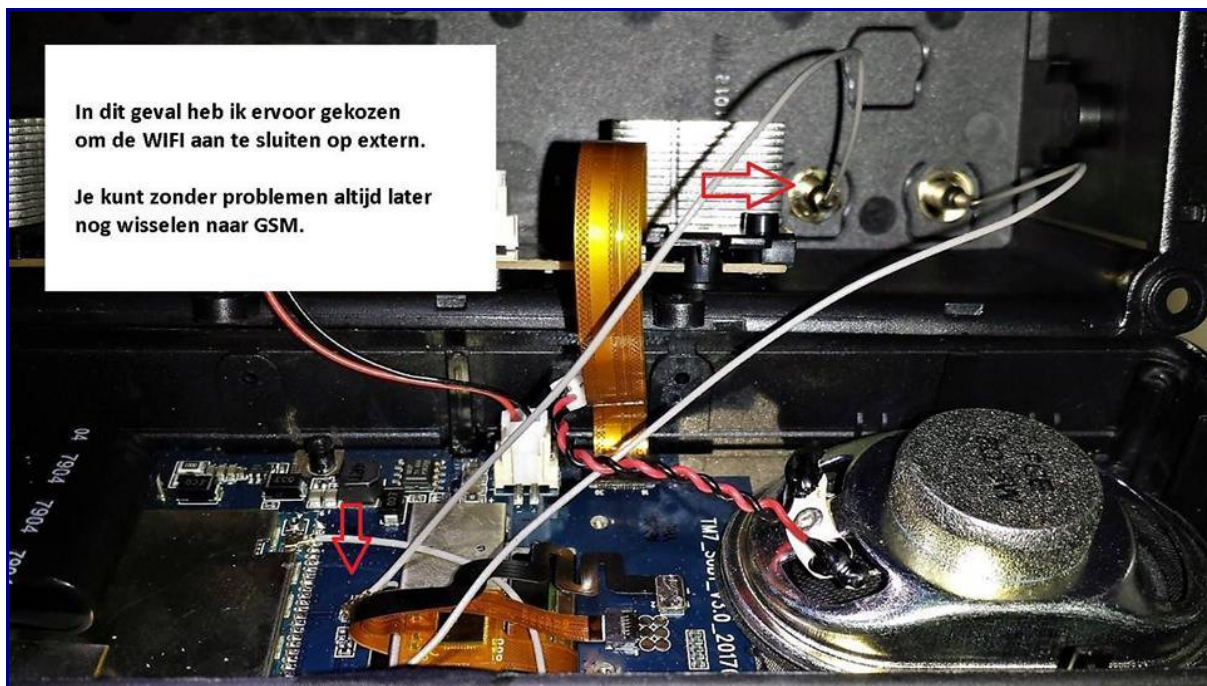
10 – You have 2 possibilities now:

- 1- External to GSM
- 2-External to wifi

Depending on how you will use the device you will have to choose on what to connect.



11 – In this case we chose to connect wifi. You can easily change this later on.



Credits: This photo report has been made by Marcel Goedemans and translated by Filip Everaert
Posted on [March 27, 2018](#)